

City of Curitiba

Gustavo Fruet
Mayor

Presented by
Fabio R Camargo, PhD
frcamargo@smop.curitiba.pr.gov.br

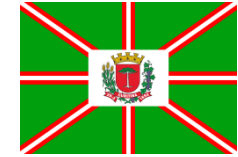
SE4All Global Energy Efficiency - Forum on Cities - Toyama & Tokyo, Japan
28, 29 and 30 October 2015



City of Curitiba



Demographics



City of Curitiba

CURITIBA

Growth in population:
2000-2010: 0,96% (per year)

Area: 431km²

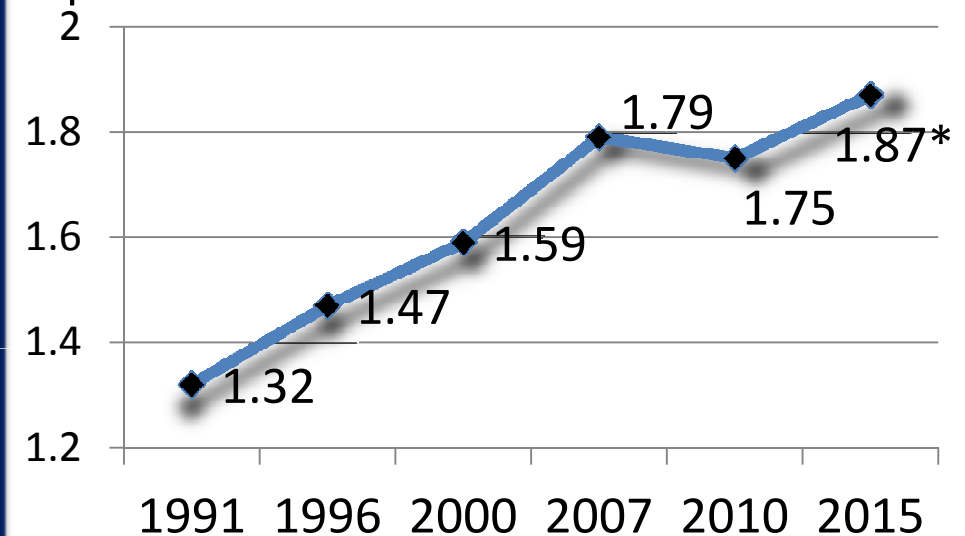
4º GDP in Brazil

MAC (29 municipalities)

3.22 millions inhab. (Census 2010)

2000-2010: 1,87% (per year)

Population in millions

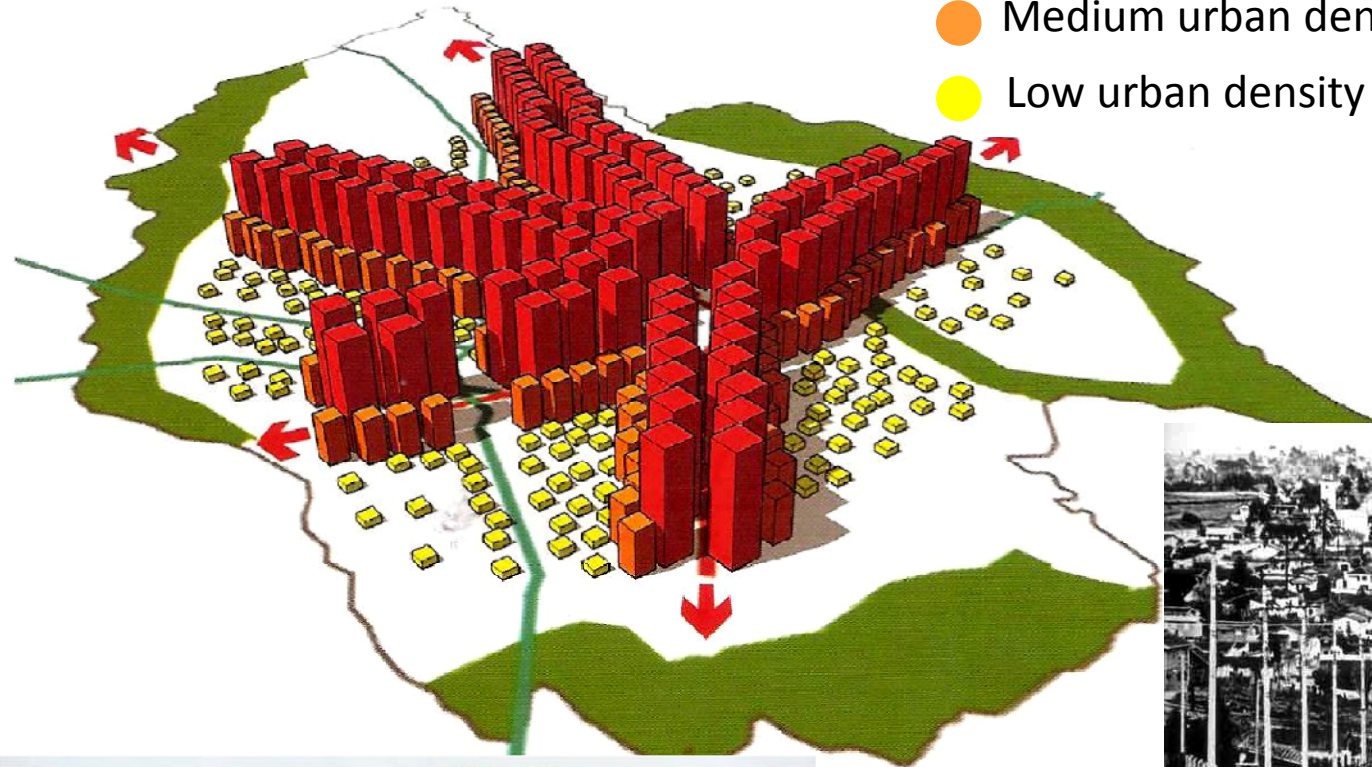


(*) Estimate

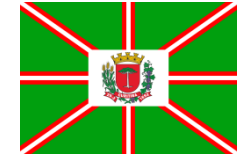
Growth of Curitiba's population

Source: IBGE/Brazil & IPPUC/Curitiba

Preliminary Urban Plan (1965)



- High urban density
- Medium urban density
- Low urban density



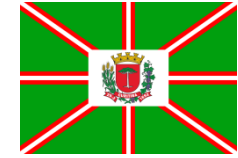
City of Curitiba



First BRT system in the world

Source: Nenhum dia sem uma linha: Uma história do urbanismo em Curitiba (Dudeque, 2010), In (Moraes, 2014, IPPUC/Curitiba).

Mobility and Transport Network



City of Curitiba



Integration Terminals for a diversity of bus routes , which are part of the integrated transportation network

Glass tube-shaped stations are raised from ground level, allowing for fare prepayment and platform level boarding including handicapped access



Citizenship Streets are connected to the transportation terminals and equipped with libraries, sports facilities and supplied with public services, which formerly were only available in the city centre.



A System towards Energy Efficiency



City of Curitiba

HIBRIBUS (Electric + biodiesel)

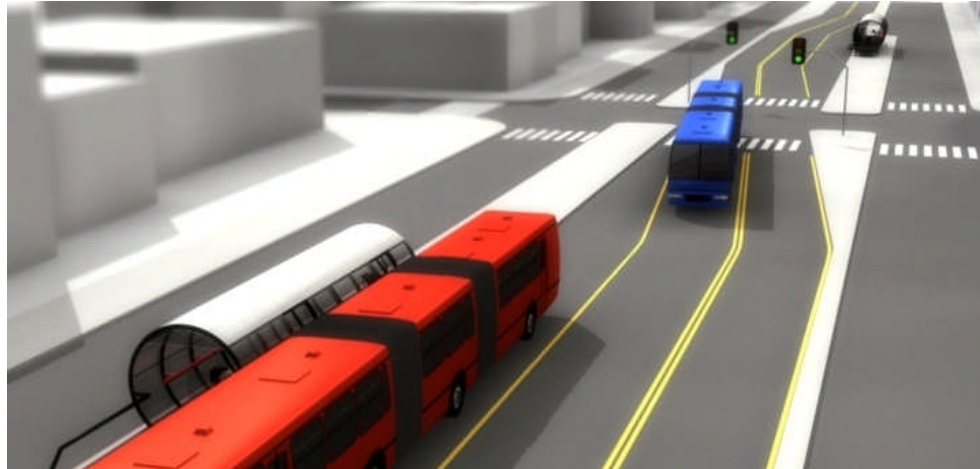
Fuel economy: 35,35%

Emissions reduction:

CO₂: 35,55%

NO_x: 80,33%

PM: 89,06%



Enlargement of the dedicated lanes at the tube stations

Ligeirão - “blue bus” for 250 passengers

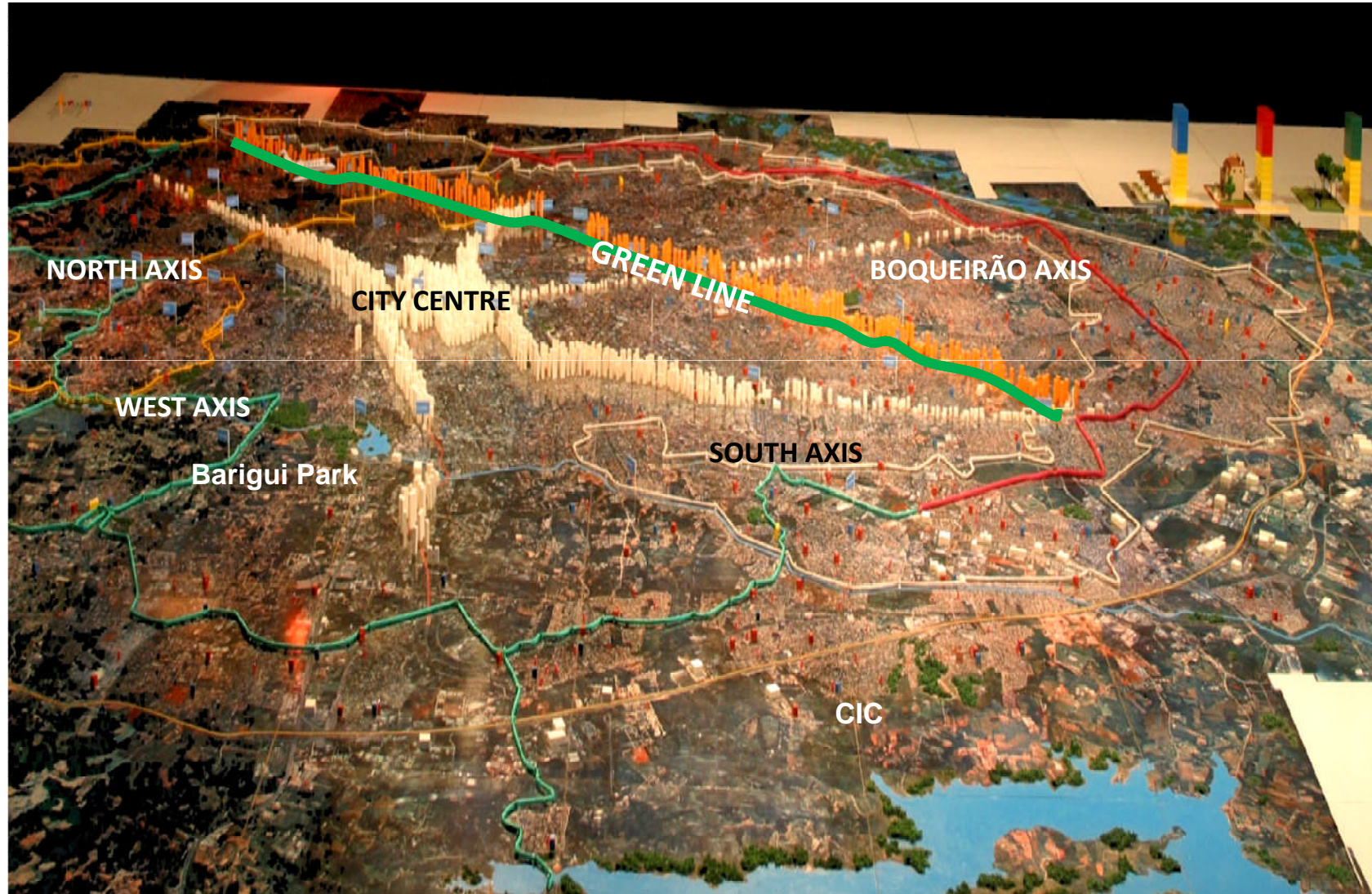


Source: IPPUC/Curitiba

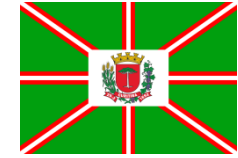
An Integrated Smart System for the City



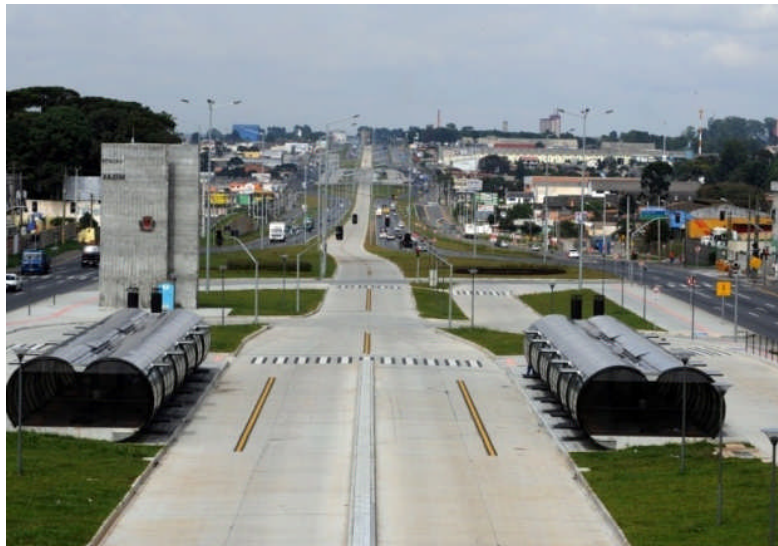
City of Curitiba



The Green Line: A New Structural Axis for a Smarter City

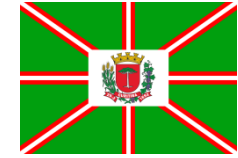


City of Curitiba

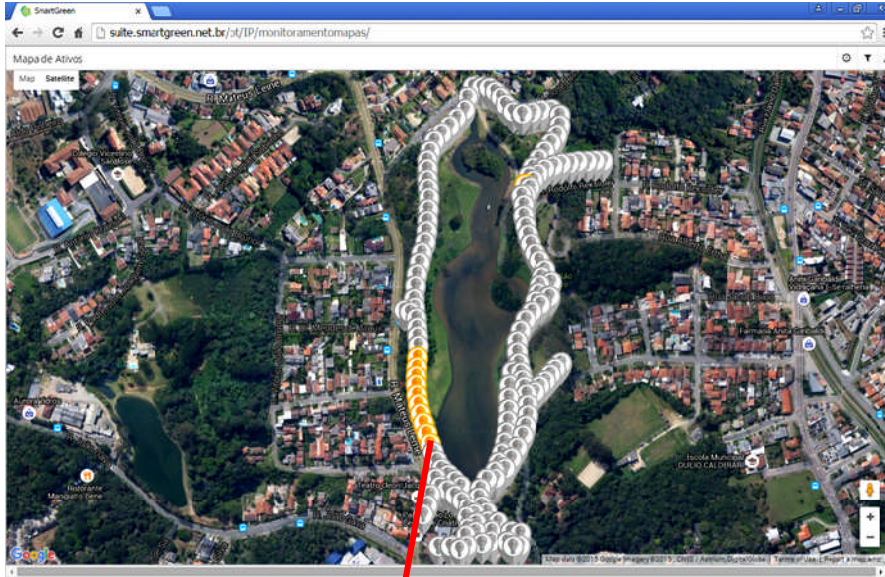


Source: IPPUC & SEPLAD/Curitiba

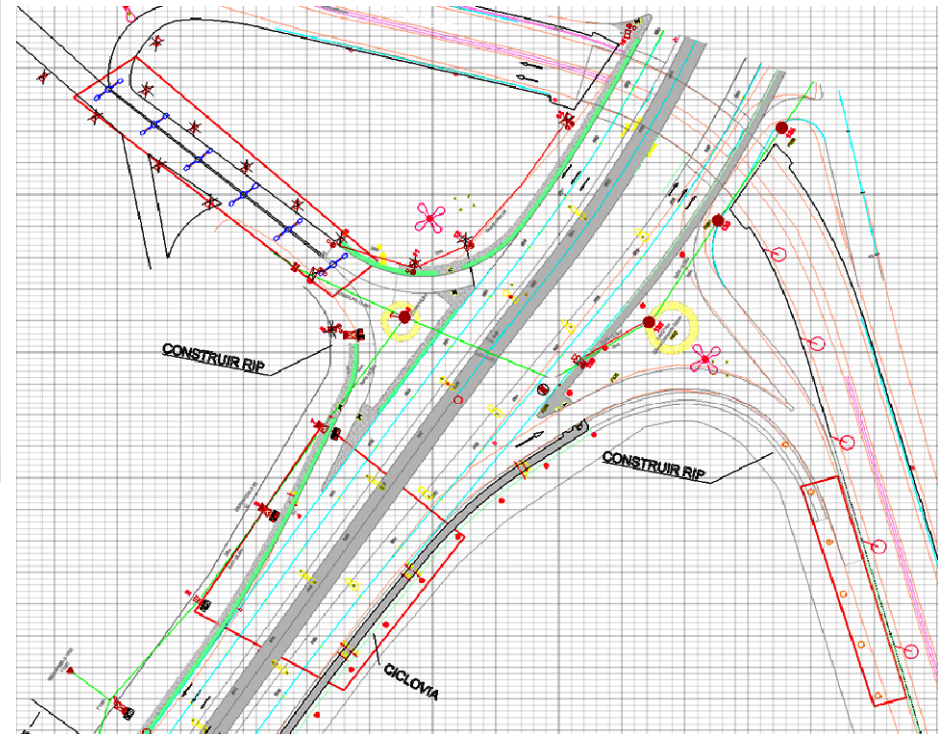
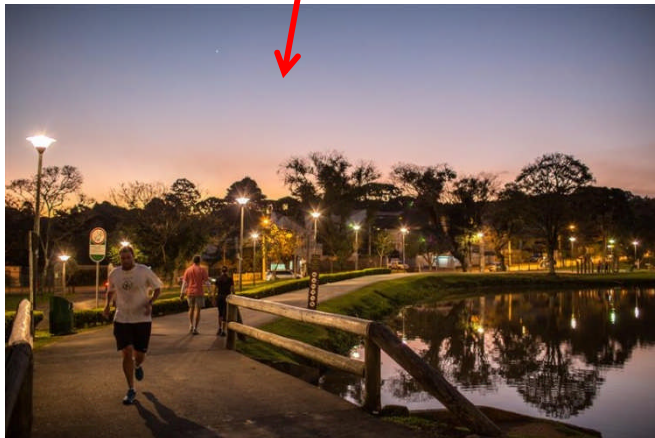
Public Lighting Program Integrated with the Smart City Concept of the Green Line



City of Curitiba



Pilot tests at São Lourenço Park.

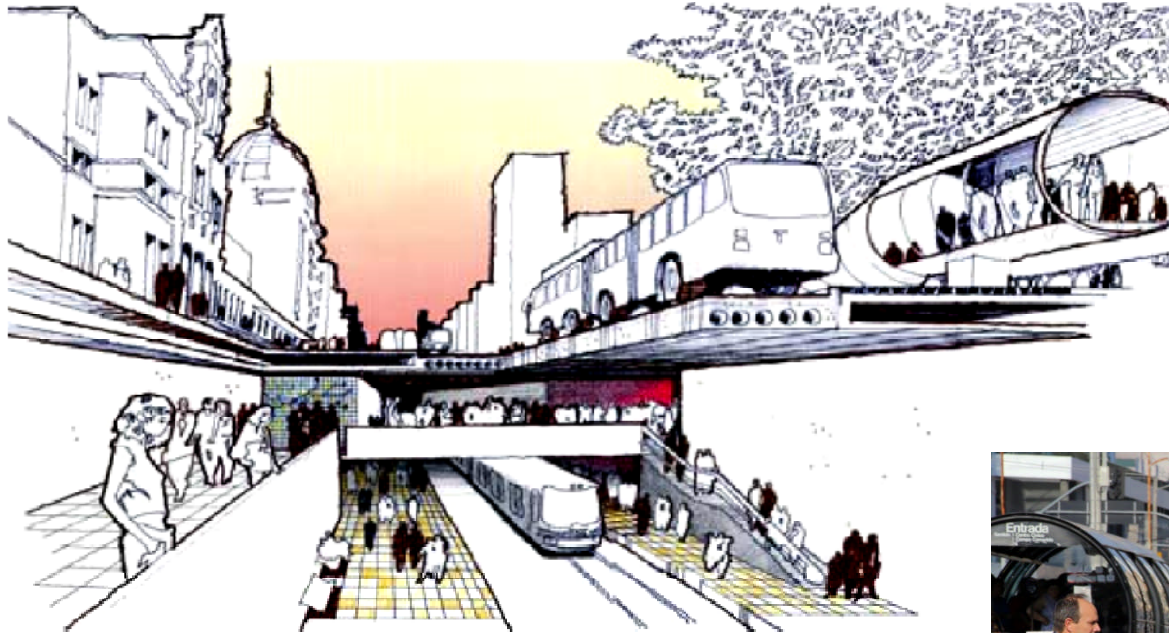


A new lighting system has been designed for the Green Line based on photometric analysis and remote monitoring platform.

Photo by Maurilio Cheli

Source: SMOP/Curitiba

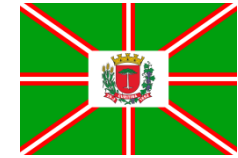
Multimodal Integration



Cycle Lanes

300 km cycle lanes:

- 90 km of cycling routes
- 80 km of traffic calming lanes
- 130 km of existing cycle lanes



City of Curitiba

Underground BLUE LINE

Total length: 22.4 km

Capacity: 600K
passengers per weekday



Smart Electro-mobility Project

Swedish-Brazilian consortium

Source: IPPUC/Curitiba Photo: SMCS/Curitiba

City of Curitiba



Thank you

Photo by E. Cardoso

*SE4All Global Energy Efficiency - Forum on Cities - Toyama & Tokyo, Japan
28, 29 and 30 October 2015*